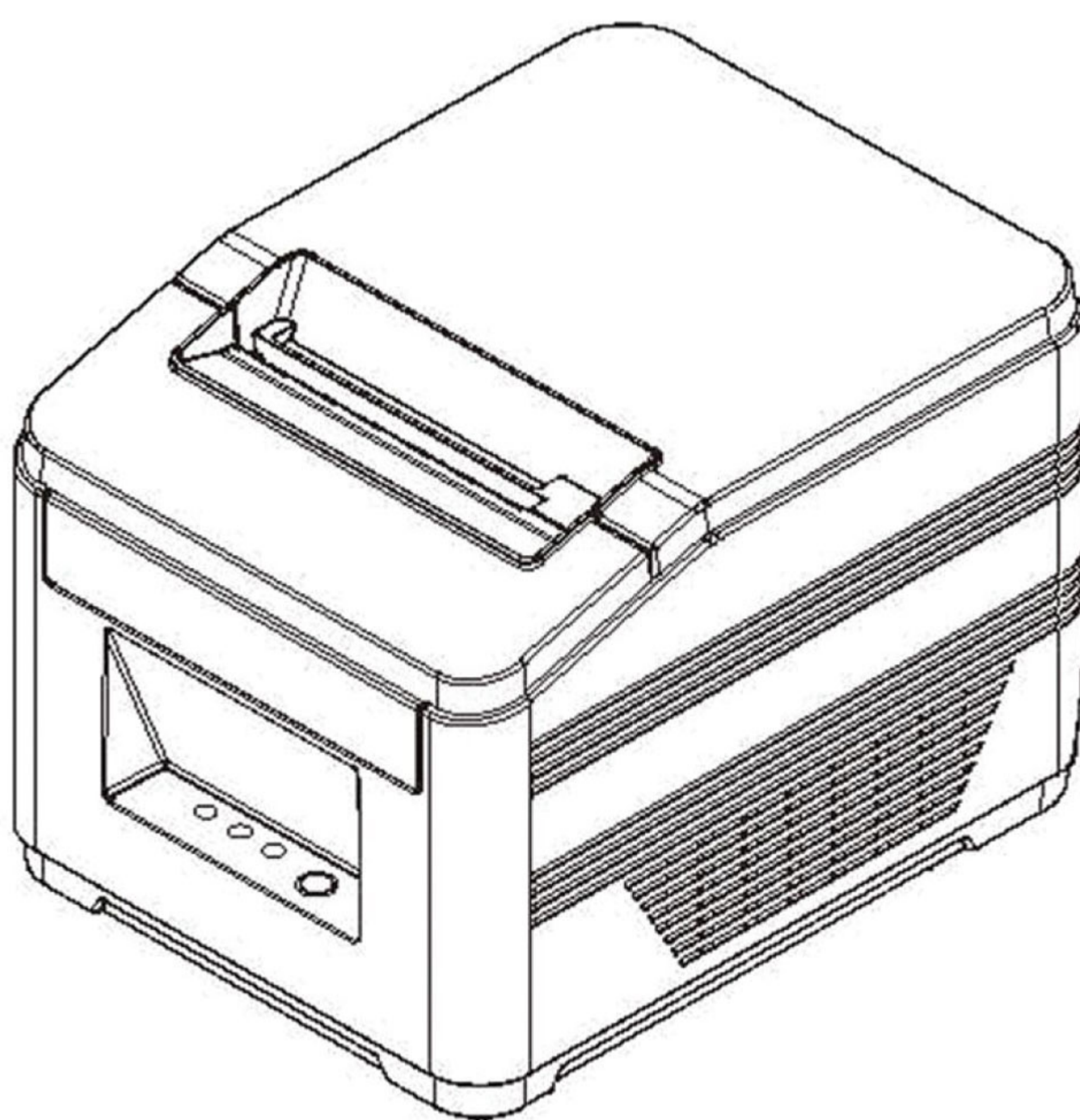




User's Manual

S-L814

THERMAL RECEIPT PRINTER



Proficient in Commercial POS Receipt Printers

1.Safety Notice:

- * Don't touch the printer head with anything.
- * Don't touch the cutter blade.
- * Don't bend the power cord excessively or place any heavy objects onto it.
- * Don't use the printer when it is out of order. This can cause a fire or and electrocution.
- * When connecting or disconnecting the plug, always hold the plug but not the cord.
- * Keep the desiccant out of children's reach.
- * Use only approved accessories and do not try to disassemble, repair or remodel it by yourself.
- * Install the printer on the stable surface. Choose firm, level surface where avoid vibration.
- * Don't let water or other foreign objects into the printer.
- * Don't connect a telephone line into the peripheral drive connector.
- * We recommend that you unplug the printer from the power outlet if no use it for a long period .

2. Applications:

- * POS system Receipts
- * EFT POS system Receipts
- * Gym, post, hospital, civil aviation system Receipts
- * Inquiry, Service system Receipts
- * Instrument test Receipts
- * Tax, Tab Receipts

3. Unpacking

After unpacking the unit, check that all the necessary accessories are included in the package.

User's Manual	1 PCS
Printer	1 PCS
Data Cable	1 PCS
Power Adapter (include power cord)	1 SET

4. Features

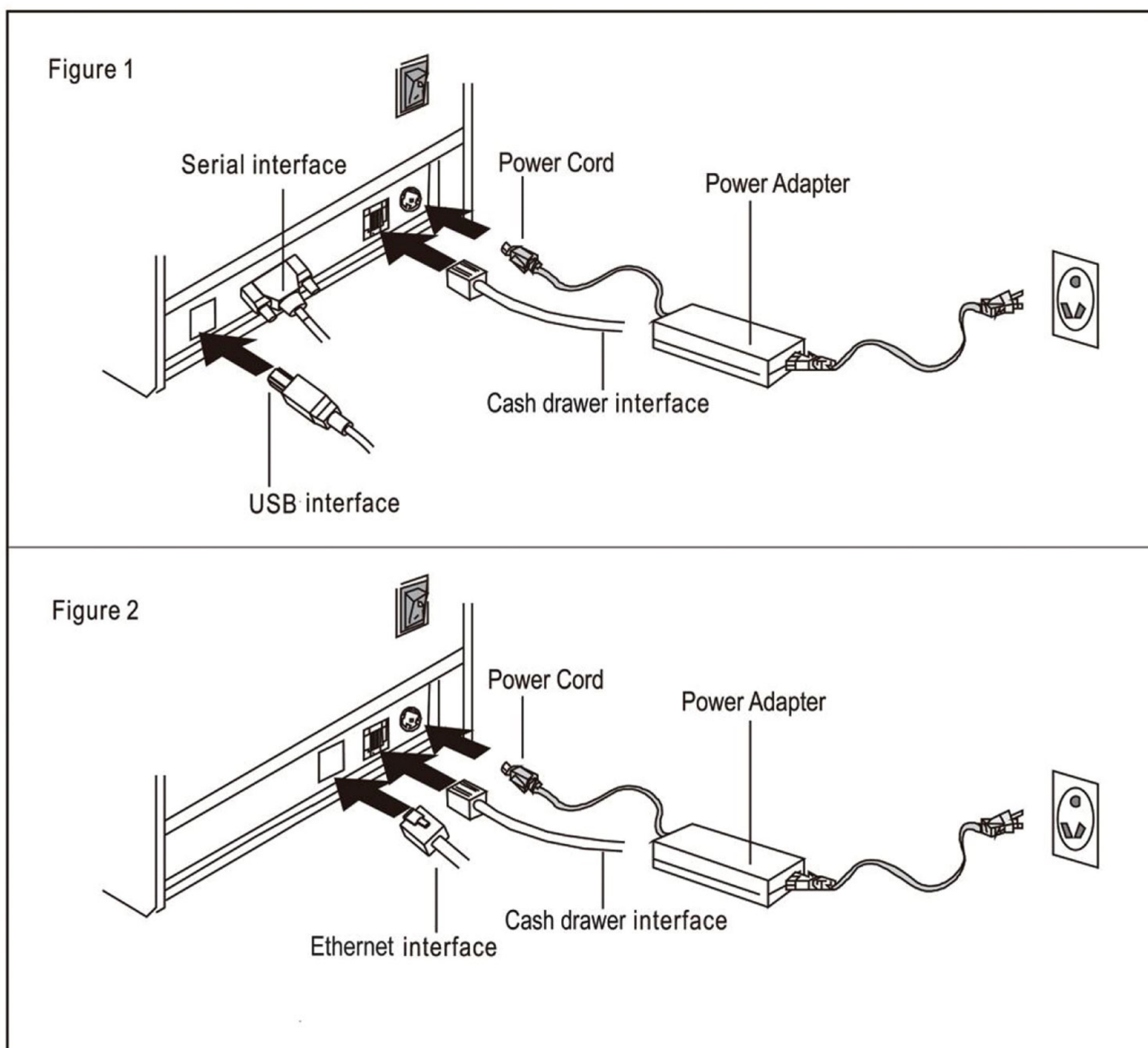
- Build-in power adapter
- Good performance and cost-effective
- Low noise, high-speed printing at 180mm/s
- Compatible with ESC/POS command
- Various character sets (include GB18030) and 68 international languages
- Built in buffer, printing data could be received when printing
- Support character enlargement, bold, underline, line spacing and character spacing
- Support different density bitmap and download graphics printing
- Integration of main board and interfaces achieves high reliability and integration
- Integration of mechanism and cutter assures durability

5. Specifications

Model	S-L814
Printing speed	180mm/sec
Printing width	79.5±0.5mm
Dot pitch	576dots / line&512dots / line
Character size	ANK Character, Font A: 12×24dots, Font B: 9×17dots, Chinese Character: 24×24dots
Print command	Compatible with ESC/POS
Interface	Serial+USB+cash drawer, Ethernet+cash drawer
Auto cutter	Partial
Reliability print	100Km
Barcode mode	UPC-A/UPC-E/JAN13(EAN13)/ JAN8(EAN8)/CODE39/ITF/CODABAR/ CODE93/CODE128
Paper thickness	0.06~0.08mm
Power adapter	Input: AC110V~220V, 50~60HZ Output: DC 24V/1.5A
Powersupply	DC 24V/1.5A
Cash drawer	DC 24V/1A
Work temperature	Temperature: 0~45℃, Dampness: 10~80%
Storage temperature	Temperature: -10~60℃, Dampness: 10~90%

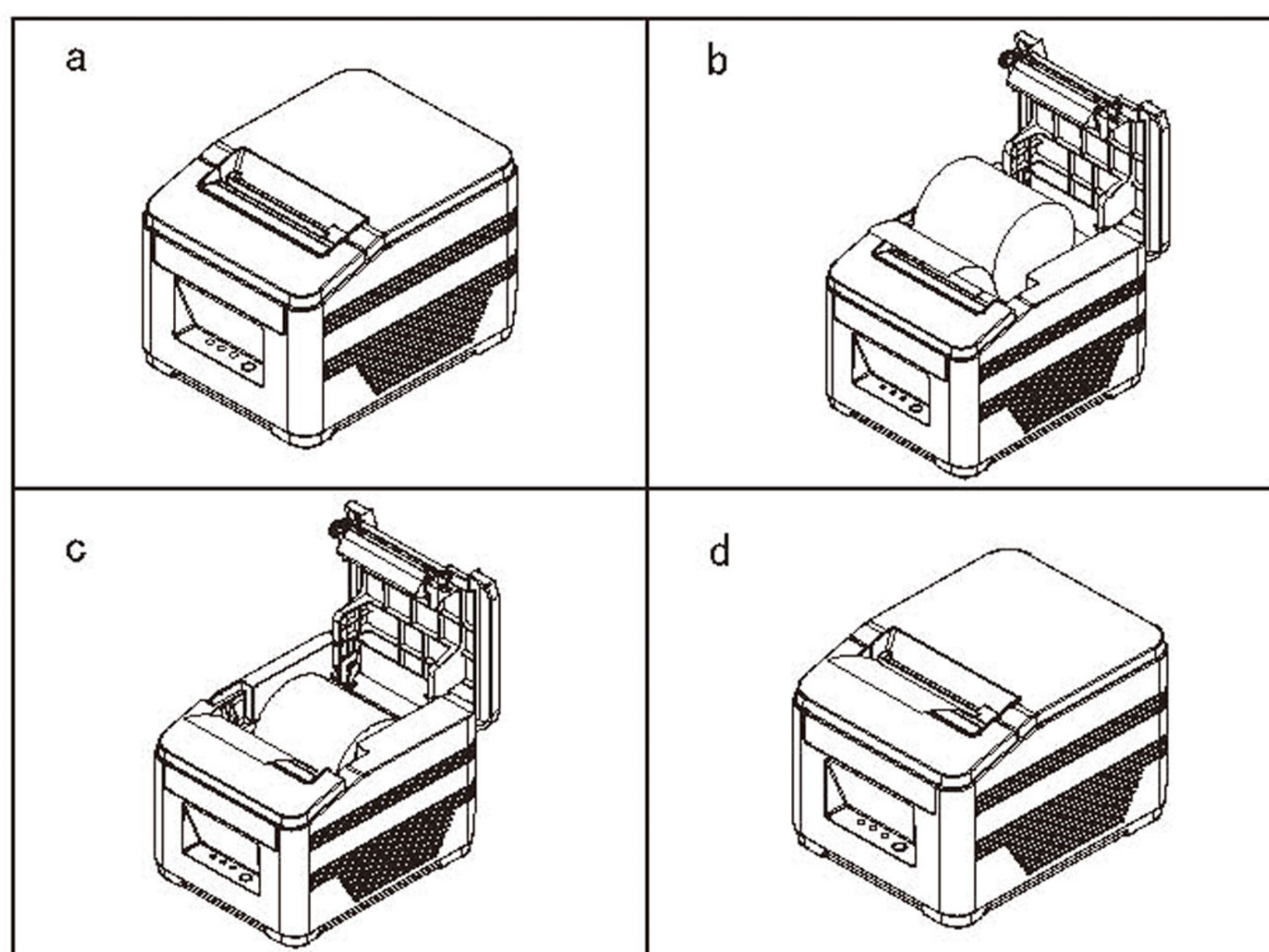
6. Printer Connection

- a. Plug the DC cord connector into the printer's power connector.
- b. Plug the data cable connector into the printer's interface connector.
- c. Plug the drawer cable into the drawer kick-out connector on the back of the printer next to the interface connector.



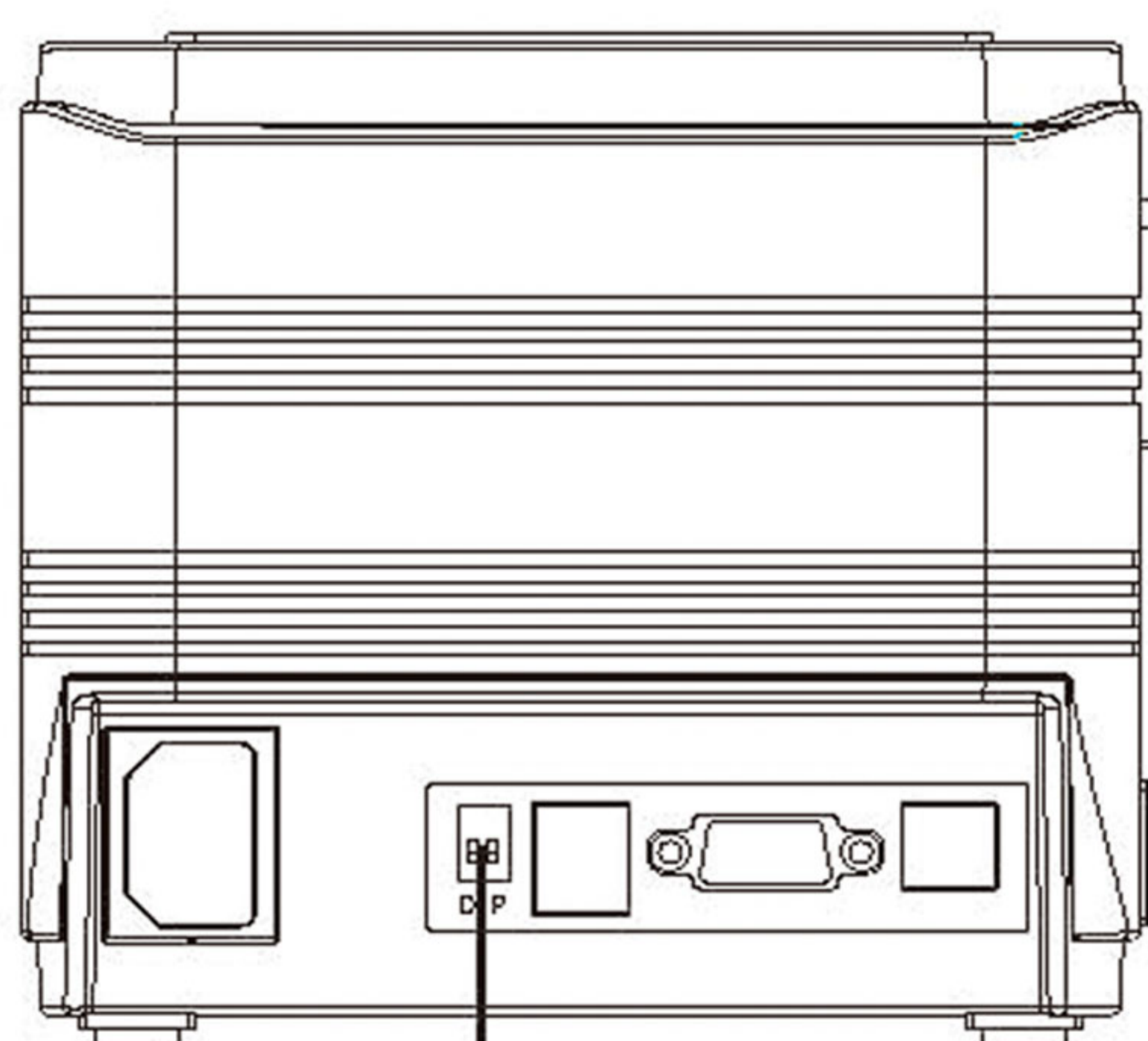
7. Installing the roll paper

- a. Open the printer cover.
- b. Install the roller in the roll paper, and put them into the printer.
- c. Pull out some paper outside the printer.
- d. Close the top cover. Press the printer cover to avoid error position of roll paper.



8. Setting the Printing Mode (DIP switches)

The DIP switches are used to set the printer to perform various functions, such as cutter mode, character set, speed, beeper, print density and etc.

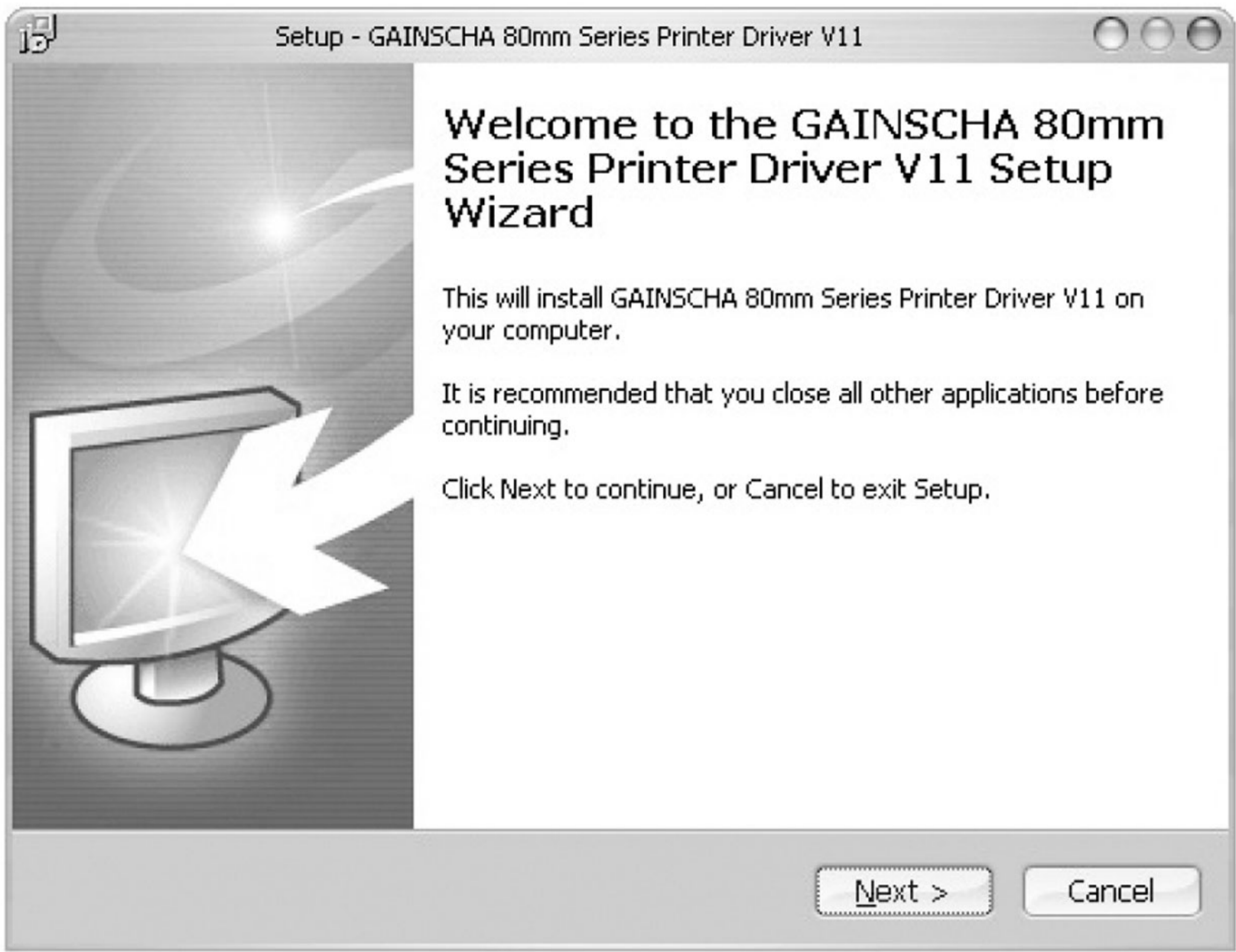


DIP SWITCH SETTINGS

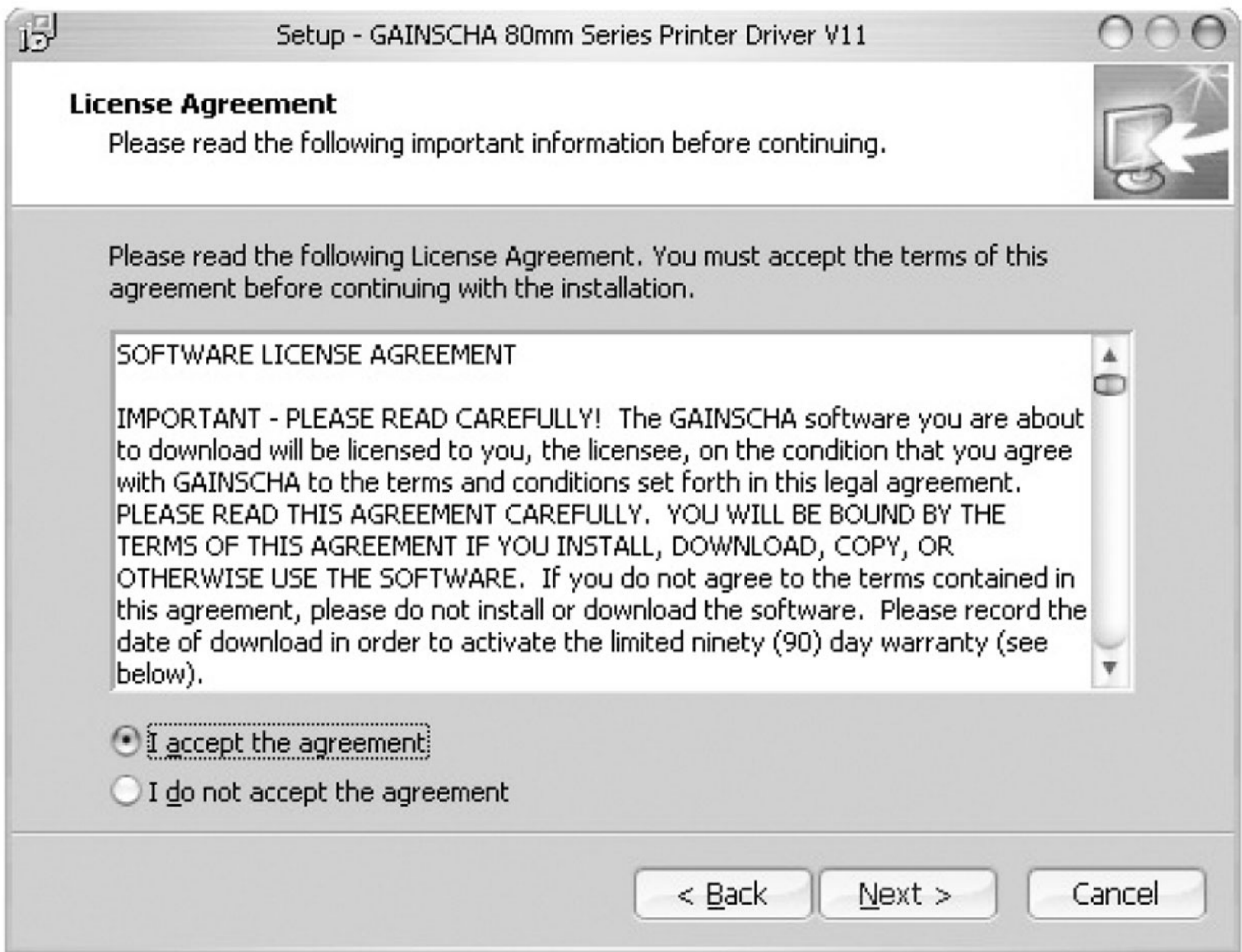


9. Driver Installation

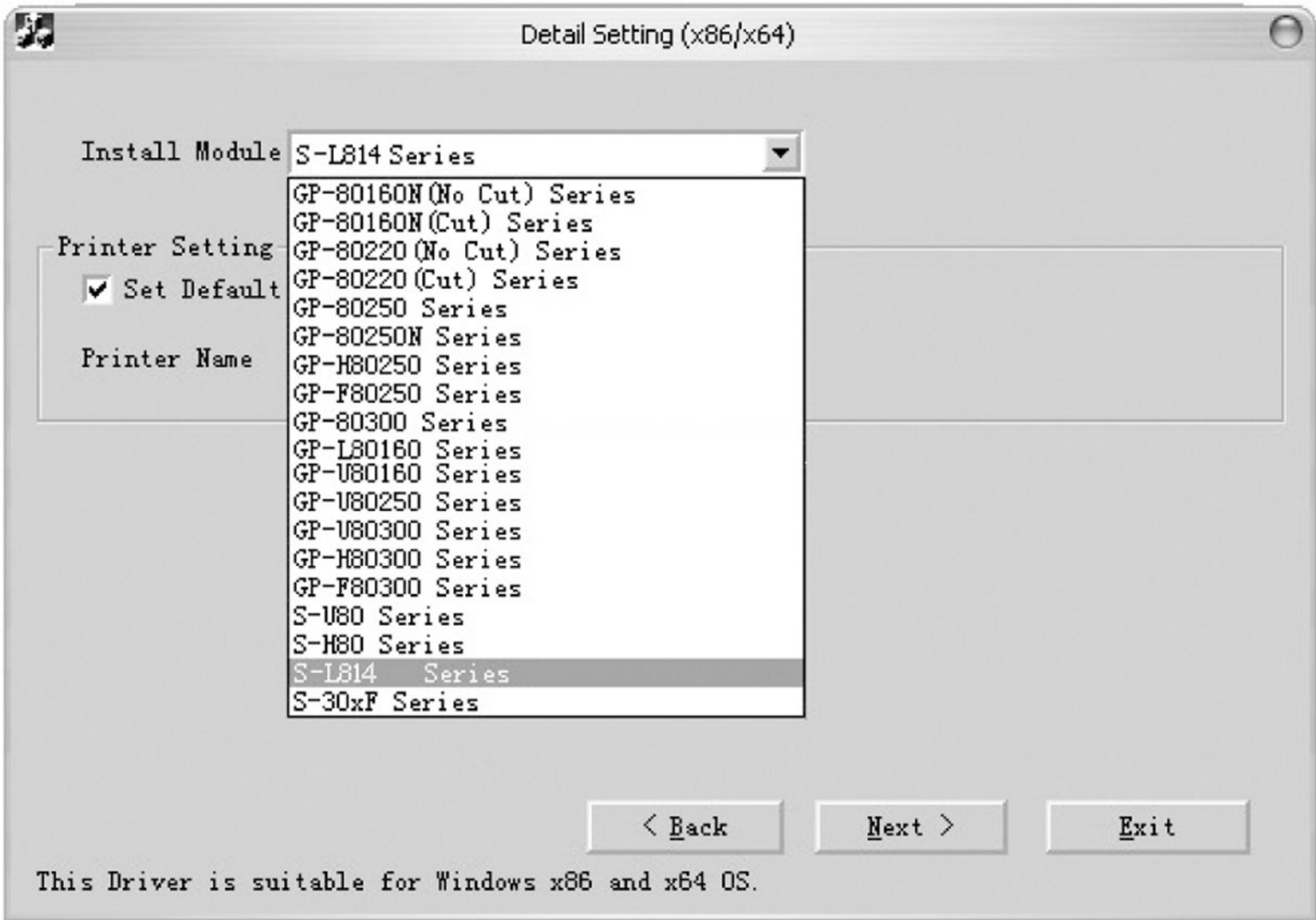
- a. Insert the driver CD disk, run the GP80DRV CN V11 to set up.



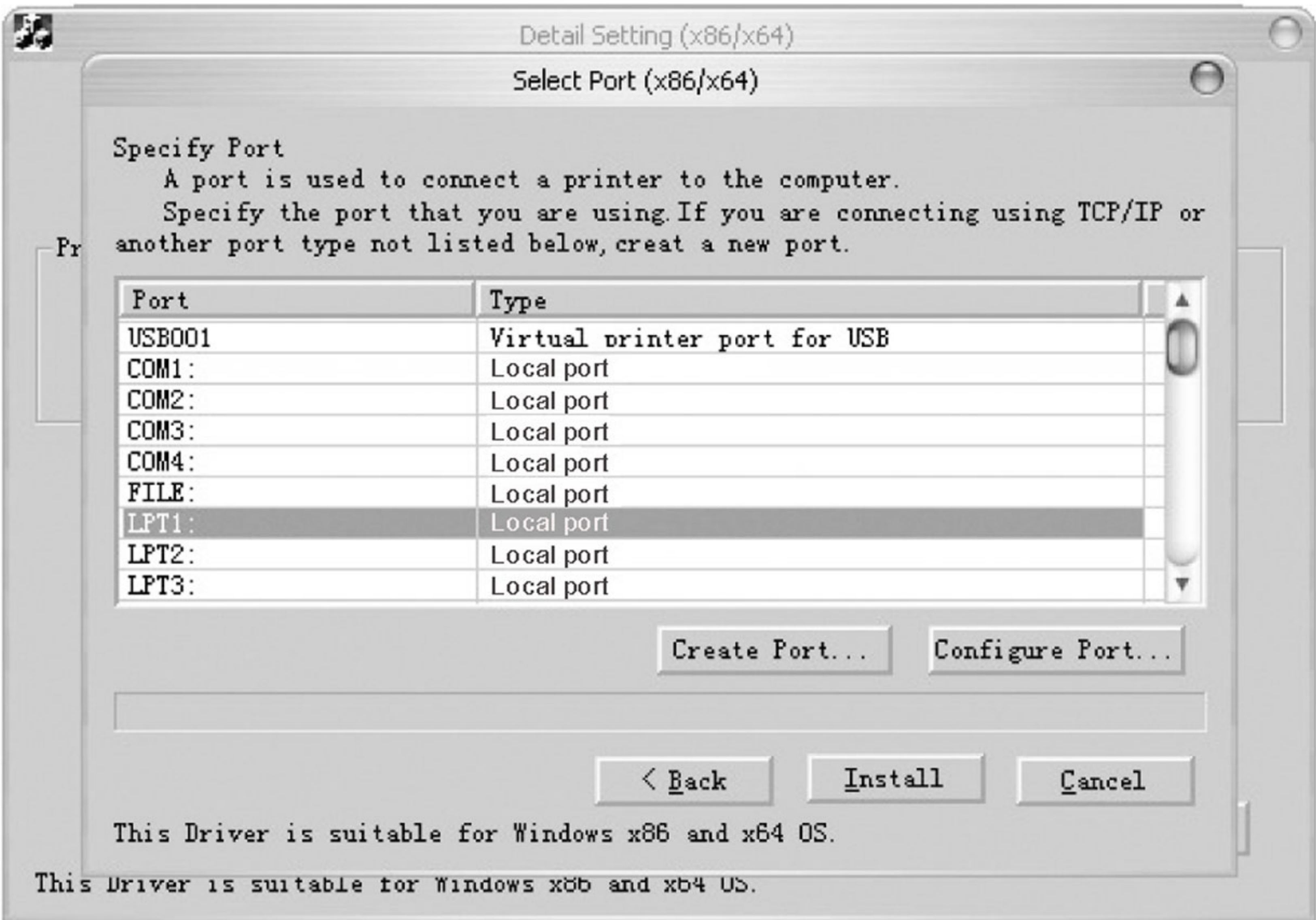
- b. Read and accept the terms to continue the setup



c. Select S-L814 Series to continue.



d. Select the corresponding printer port.



 **WARNING:**

All rights reserved. No part of this publication may be reproduced, stored in a retrieval, or transmitted in any form or by any means, electronic, mechanical, photocopying, recording, or otherwise, without the prior written permission of Gainscha (Hong Kong) International Limited. The company reserves the rights of modifications of manufacture technology, assembly, software and hardware without notice. Contact your franchiser if you need further information about the product.

